

Multicell Loaner Charge MC6/24-60C1

The MC6/24-60C1 was designed specifically for loaner fleets. This versatile charger is supplied with an automatic control and DC voltage selection jumpers. Perfect for sending with a lift truck for short term rentals. 120/1/60 AC cord and molded plug, heavy duty wheel and handle are standard features. Rugged 16 ga. cabinet. Jumper setting inside for 12V, 24V, 36V or 48V battery. Maximum start rate of 60 Amps tapers to 25A at finish.

DC Volts: Selectable 12, 24,36 or 48.

DC Amps: 60 max start to 25A finish.

8' DC Cable with SB175 gray connector . AC Volts 120/1/60.

AC Amp draw 12.6 .

10' AC cord with molded 3-prong plug.

Output Display : P46-301

Weight 90#

Case 500 H: 20.5" x W: 17.25" x D: 14.75"

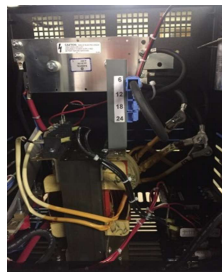
Options: DUAL CABLE/CONNECTORS 175 & 350 GREY #038-199 LIST \$280.00

List Price Each: \$2855



* Requires 60Hz Voltage Code
C= 120

F.O.B. First Destination, Continental USA
Prices and Specifications subject to change
All Prices in US Dollars



Charge 6,12,18 & 24 Cells
Ideal for Rental Fleets/Loaner Applications

Orders with ship dates beyond 60 days are subject to price change.
not available for sale or use in the states of California and Oregon- CEC